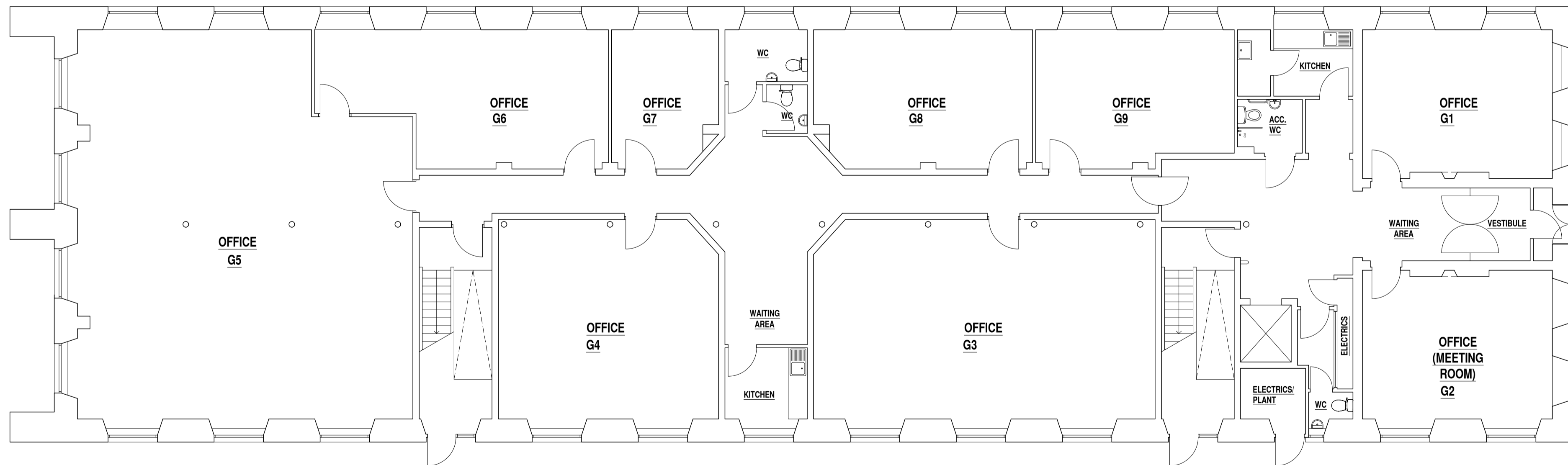
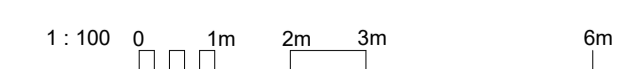


FIRST FLOOR



GROUND FLOOR



REV	DATE	DESCRIPTION	DRN

**Bracewell Stirling CONSULTING**

38 WALKER TERRACE, TILLCULTRY, FK13 6EF 01259 750301  
 5 NESS BANK, INVERNESS, IV2 4SF 01463 233760  
 15 LOCHSIDE STREET, OBAN, PA34 4HP 01631 359054

CETERIS (SCOTLAND) LTD

MENSTRIE BUSINESS CENTRE - EXISTING PLANS

STATUS: **INFORMATION**

SCALE:	1:100	DRAWN:	TW
PAPER SIZE:	A1	DATE:	Feb 2019

DWG No.	4497- Menstrie	REV.	
---------	----------------	------	--